

# 1

## Installing RILSIM

---

In recent years the Microsoft® Windows® operating systems have become more stable and reliable, but at the same time their complexity has increased substantially. One measure of this increase in complexity is the fact that full-scale applications must now be installed through a rather complicated technical process if they are to function properly. RILSIM is no exception. If you simply copy the executable file to your hard disk, the software will run but some of its capabilities will be reduced and others will not be available at all. This is because the software must be properly registered with the computer's operating system in order to achieve full functionality. Thus it is essential that you install RILSIM as described in this chapter and by using the installation package provided on the CD-ROM or downloaded from the Internet.

### Chapter Synopsis

The following pages explain how to install RILSIM on your computer so that you can begin using it to develop and run full-scale logging simulation models. If you are already familiar with the process of installing software under the current generation of Windows operating systems, you'll probably find little in this chapter that is new to you. Even so you might benefit from a quick look through the chapter before you begin the installation process.

Also provided in this chapter is information on how to install Adobe® Reader®, a separate application. This software is widely used for publishing documents electronically so it may already have been installed on your computer. Otherwise you'll need to install it if you want to use the online version of this *User's Guide*.

## System Requirements

RILSIM has been designed to run on a large majority of the personal computer systems that are in common use around the world. In particular, considerable effort has been taken to ensure that the software is compatible with the relatively modest computing hardware often available in developing countries.

Nevertheless, RILSIM won't run on *every* computer. Before installing the software, you should make sure that your computer meets the following minimum requirements:

- The computer must run a 32-bit version of the Microsoft Windows operating system. This means it must have Windows 95 or later. At present this includes Windows 95, 98, Me, NT 4.0, 2000, and XP. It is likely that RILSIM will also run without problems if installed under Windows Server 2003, but this has not been tested.
- If the operating system is Windows NT, then the version must be 4.0. In addition, certain of RILSIM's optional capabilities require NT 4.0 to have been upgraded with Service Pack 4 or later. RILSIM's installation program checks this before allowing these options to be selected.
- Your computer system should have at least 40 Mbytes of disk space available during the installation process. The software and related files require a permanent allocation of about 25 Mbytes of disk space.
- Your computer should have at least 24 Mbytes of random-access memory and a Pentium-class processor operating at 75 MHz or faster. Systems that exceed these requirements will of course operate faster and can run larger simulation models.

All of the software needed to run RILSIM is provided as part of the installation package. However, to use the electronic version of this *User's Guide* you must also have the Adobe Reader program installed. Installation modules for this software are provided on the CD-ROM, and you must install the software separately from RILSIM. The installation procedure is described on pages 14-15 of this chapter.

In addition, RILSIM's own capabilities can be extended if you have access to a spreadsheet program capable of reading tab-delimited text files, but this is not a requirement for the installation of RILSIM.

## Options for Installing RILSIM

You have two options for installing RILSIM:

- You can install it from the CD-ROM.
- You can download the installation package from the Internet and use it to install the software.

Both methods follow essentially the same procedures, provide identical choices, and you end up with the same result. You would normally choose the second method only if you don't have the distribution package. The main disadvantage of the second option is that the files may take a long time to download unless you have a broadband connection to the Internet.

## Before You Install RILSIM 2.0

If an earlier version of RILSIM has been installed on your computer, you can either remove it before you install version 2.0, or you can allow the RILSIM Installer to remove it for you. The RILSIM Installer will automatically remove any earlier version of the software that it finds. If you prefer to do this yourself, follow the instructions in the section entitled "Removing RILSIM" beginning on page 17 of this chapter. Then continue with the installation as described below.

## Starting the Installation

- If you have the CD-ROM, place it in your computer's CD or DVD drive and close the door. The installation package should launch automatically from the CD-ROM. If it does not, use Windows Explorer to navigate to the root directory of the CD-ROM. Double-click the file named **Setup.exe**. This will launch the installation package.
- If you don't have the CD-ROM, you must first download the installation module from the Internet. Direct your browser to the Blue Ox Forestry website at

<http://www.blueoxforestry.com/RILSIM/>

and follow the instructions. When you download the installation module, note its filename and the folder on your computer into which you

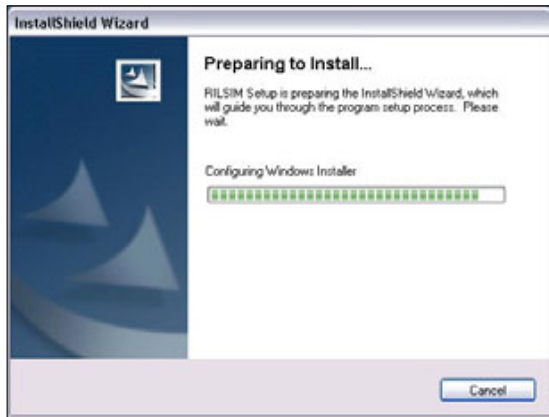
download it. Then use Windows Explorer to navigate to the folder and double-click the installation module. This will launch the installation package.

**Important Note:** In order to install RILSIM on a computer running Windows NT, 2000, or XP **you must have administrator privileges**. Otherwise you will receive a message informing you that RILSIM cannot be installed. In that case your system administrator must install the package for you.

## Installation Step by Step

### Step 1.

After the RILSIM installation package has been launched, an image like the one at right will appear briefly. If your Windows system does not yet include the Windows Installer program, it will be installed automatically at this time and a message will be displayed. Windows Installer is a product of Microsoft Corporation. It is a standard utility designed for use in installing software under all versions of Windows.



### Step 2.

Under some circumstances, RILSIM's installation software may detect an earlier version of RILSIM that it cannot remove from your computer. If this happens a message like the one shown below will appear. You must then uninstall the older version of RILSIM before you can continue with



the installation of version 2.0. To do so, follow the instructions in the section entitled "Removing RILSIM" beginning on page 17 of this chapter. After uninstalling the earlier version you can then re-start the installation process.

When installation of version 2.0 can continue, the screen shown below will appear. Press the **Next** button to start the installation. If you decide that you want to abort the installation, simply click the **Cancel** button in this or any other installation window. You will be able to re-start the installation later at any time you choose.



### Step 3.

Read the RILSIM License Agreement. This agreement will be installed as part of the RILSIM package so that you can inspect it any time after the installation. You must agree to the terms of the license agreement before installation can proceed. When you click the radio button labeled "I accept the terms in the license agreement," the **Next** button will become operable and you can click the button to continue.



### Step 4.

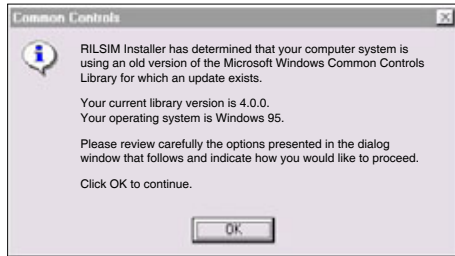
Next, the RILSIM “Readme” file will be presented for your information. Like the RILSIM License Agreement, this file will also be installed on your computer and will be available for your inspection after the installation has been completed. The Readme file contains the following:

- A brief summary of how to install RILSIM.
- A list of files placed on your computer’s hard disk by the installation process.
- Information about how to remove RILSIM from your computer.
- A list of items that should be included if you redistribute RILSIM to anyone else.

When you press the **Next** button after you have finished with the Readme file, you’ll either receive a message like the one shown below, or you’ll be taken directly to **Step 6**.

***Please Note:***

If a message like the one at right does *not* appear, you should skip Steps 5a and 5b and go directly to **Step 6** on page 8.



### Step 5a.

The message above indicates that an update is available for the “Common Controls Library” on your computer. This is a library of software routines provided with the Windows operating system for use by programs like RILSIM when displaying objects on the computer screen. The message should only appear if you are using either Windows 95 or Windows NT 4.0, or possibly certain versions of Windows 98. If your operating system is Windows NT 4.0, the message will also indicate the version of any Service Pack (e.g., SP3, SP4, etc.) that may have been installed on your system. This information will be used in the following step.

## Step 5b.

After you click OK on the message screen above, you will see a window like the one below, presenting you with three choices related to the Common Controls Library. The discussion below the image outlines these options in more detail.



- **Install the library update.** For most users who receive the message on the previous page, this is the recommended course of action. It is therefore the default selection. If you press **Next** the update will be installed on your system. Depending on your version of Windows you may have to reboot before the installation can continue. In that case you may need to restart the installation from **Step 1** after you have rebooted.

**Important note:** If you are running Windows NT 4.0 and the latest Service Pack installed on your system is less than SP4 as indicated by the window in Step 5a, then you should *not* install the update. To do so you first need to install the latest Service Pack—see the final option at the top of the next page for more information about this.

- **Do NOT install the update.** If you have very little remaining space on your computer's hard disk, then you should choose this option. You may also want to choose this option if you are running Windows NT 4.0 with SP3 or less, or if you simply don't want any new Windows components to be installed on your system with RILSIM. Choosing this option will prevent RILSIM from using certain display enhancements that have been incorporated into recent versions of Windows, but it will not interfere with the operation of RILSIM itself.

- **Exit to install an update.** You may prefer to install the updated Common Controls Library yourself, rather than letting the RILSIM installer do it. You can also choose this option if you are running Windows NT 4.0 with SP3 or less. You would then need to download the latest NT 4.0 Service Pack from Microsoft and install it before restarting the RILSIM installation. Finally, you can choose this option if you prefer to install the latest version of Microsoft Internet Explorer. Doing so will automatically update the Common Controls Library.

**More information about these options** is available by clicking the **Help** button on the window shown in Step 5b on the previous page. If you are using the CD-ROM to install RILSIM you can access the same information from a file named ComCtl32.rtf, which you will find in a folder named **\Redistribute\Comctl32** on the CD-ROM. This is a “rich-text format” file. A separate Microsoft Word document named “MS Knowledge Base-Comctl32.doc” is located in the same folder of the CD-ROM. This file, from Microsoft, briefly reviews the options related to updating the Common Controls Library and Internet Explorer.

After either installing the library update or choosing not to install it, you will be taken to **Step 6** of the RILSIM installation.

### Step 6.

Enter your name and organization as shown in the image below. Default values will be placed in these edit fields if available from your system. If they’re correct you can just click **Next** to accept them. You will also note that a serial number has been automatically generated and is shown in the installation dialog. This serial number cannot be changed. It will be associated

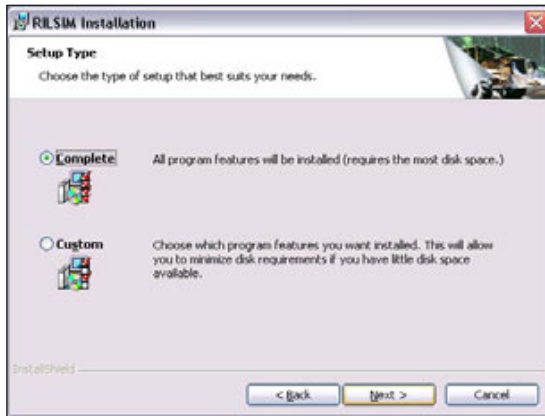
with your copy of RILSIM and can be obtained at any time from the **About** box available through the RILSIM Help menu.



The screenshot shows a dialog box titled "RILSIM Installation" with a sub-header "Customer Information". Below the sub-header is a message: "Please enter your name and organization, or leave the default values if appropriate. The serial number cannot be changed." There are three text input fields: "User Name:" with the placeholder "Enter your name here", "Organization:" with the placeholder "Enter your organization's name here", and "Serial Number:" with the value "RILSIM 2.00-0107D4-100320". At the bottom left, there is a "InstallShield" logo. At the bottom right, there are three buttons: "< Back", "Next >", and "Cancel".

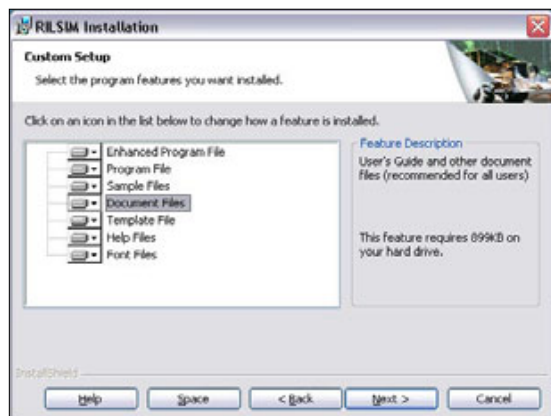
## Step 7.

Decide whether you want a **Complete** installation or a **Custom** installation. The complete installation is normally the better option unless the space on your hard disk is extremely limited. Choose one of these options and click **Next**.



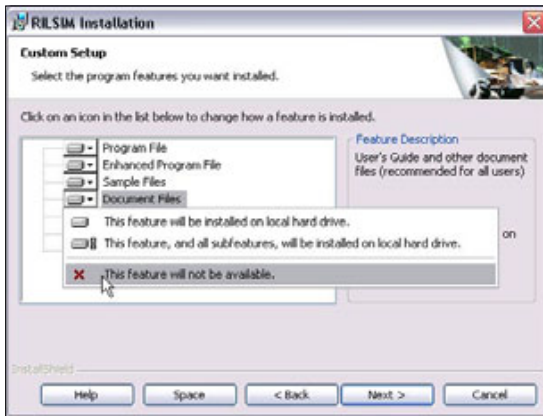
## Step 7a.

If you selected the **Complete** installation option you can skip ahead to **Step 8**. Otherwise you will need to make decisions about which features of RILSIM you want to install. The features are shown in the image below. Only two—**Sample Files** and **Document Files**—are optional. All others are either required for the installation or will be installed only if needed. For help with this step you can press the **Help** button. Pressing the **Space** button will give you information on how much space will be required on your hard disk for the installation options that are currently scheduled to be installed.



## Step 7b.

If you decide to remove either of the optional features from the installation, click the small down arrow to the left of the feature's label. Then click the x option on the popup window as shown here to remove the feature from the installation. When you're satisfied with your settings, click **Next** to continue with Step 8.



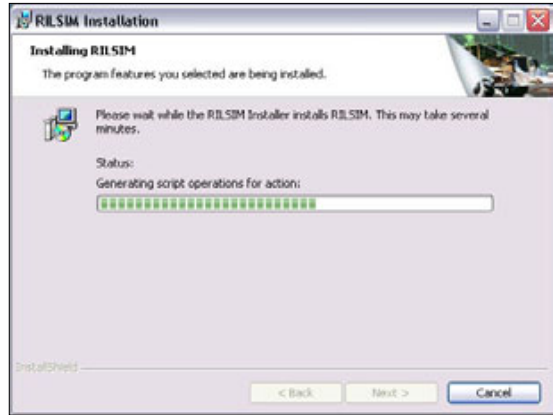
## Step 8.

At this step you can specify the location where RILSIM should be installed. The default location is in the **Program Files** folder of the drive on which your Windows system has been installed. To specify a different location click the **Change** button. When you're satisfied, click **Next**. This will bring up a final preparatory window giving you one last chance to go back to a previous step or cancel the installation. Click **Next** again to finalize the installation process.

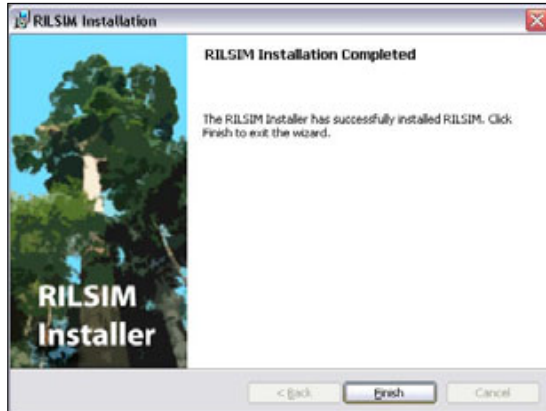


**Step 9.**

A window like the one at right will report progress as the installation proceeds.

**Installation Complete**

When the Windows Installer has completed its work a final window similar to the one shown below will appear. This is your assurance that a copy of RILSIM has been successfully installed on your computer.



## Launching RILSIM

Now that RILSIM has been installed on your computer, how do you use it? As with other Windows software, RILSIM is normally launched by clicking an icon, which is a small picture associated with an executable file.



The RILSIM icon looks like the image at left. During the installation, an icon like this will have been placed on your computer's desktop. You can double-click the icon to launch RILSIM. You can also remove it if you prefer not to have icons on your desktop. Simply click once on the icon and drag it to the recycling bin. Then click again to assure Windows that you really do want to remove the icon and not the program itself.

An alternative way of launching RILSIM is shown in the illustration below. This method uses the **Start Programs** menu. Click the **Start** button at the lower left of your computer screen, then click **Programs** or **All Programs** (depending on your version of Windows) in the menu that appears above it. Another menu of programs will then pop up, in which you should find an item named **RILSIM 2.0**. Click this item and a submenu will open that exposes three items, as shown in the illustration. Clicking on the **RILSIM** item will launch the program.

Note that each of RILSIM's submenu items is accompanied by a small icon. The RILSIM icon in this menu is a smaller version of the desktop icon shown above. You'll also see this smaller icon in Windows Explorer if you open the folder in which RILSIM has been installed.



In addition to launching RILSIM itself, you can use the **RILSIM 2.0** submenu to launch **RILSIM Help**. This is a comprehensive online help system that is also available from within RILSIM. We'll have more to say about the help system in Chapter 2.

Finally, if you click on the **Documentation** item of the submenu (as shown above) a second submenu will appear with several additional items:

- **License** – click this item to open the RILSIM License Agreement in your word processor.

- **Readme** – click to open the RILSIM Readme file in your word processor so that you can read it.
- **Readme (Source)** – click to open a Readme file with information about the programming source code that was used to create RILSIM. Programmers can use the source code to modify RILSIM for special purposes, such as translating commands and printed text into languages other than English.
- **User’s Guide** – click to load the online version of this *User’s Guide* into the Adobe Reader. If you don’t have the Adobe Reader installed this item will be inoperative. To install the Adobe Reader software follow the directions in the section entitled “Installing Adobe Reader” beginning on page 14.

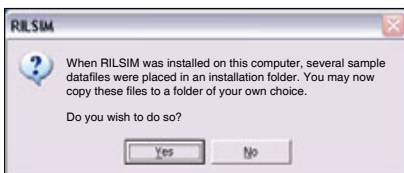
## First Launch

When you launch RILSIM the first thing you will see is RILSIM’s “splash screen” (right). This window appears every time RILSIM is launched unless you dictate otherwise by clearing the Splash Screen option in RILSIM’s View menu. You can close the splash screen immediately by clicking the



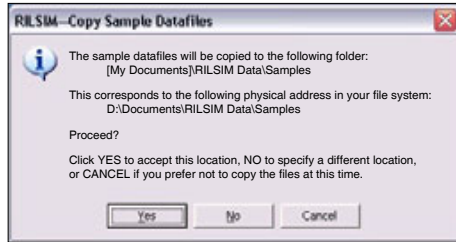
mouse button or by pressing **Enter**. Otherwise it will remain visible for several seconds and then will close automatically.

After the splash screen closes, the message shown below will appear. This will happen **only once** after you have installed RILSIM. As the message indicates, when RILSIM was installed, several sample datafiles were placed in a temporary location. You are now given the option of copying them to a folder of your own choice.



The suggested location is a subfolder named **RILSIM Data Samples** under your “My Documents” folder. This is suggested simply because when Windows Explorer opens it defaults to the “My Documents” folder unless

you've changed the default, and thus any subfolders located there can be found quickly. If you click **Yes** a message box like the one at right will appear. Note that this dialog allows you to change the location where the files will be installed if you wish to do so. If you click the **No** button in this



window, a new dialog will open in which you can point to an existing folder on your hard disk. The **RILSIM Data\Samples** subfolder will then be created within this folder and the files will be copied there.

After the files have been copied, RILSIM's main window will open. We defer a discussion of this until Chapter 2.

## Installing Adobe Reader



In order to use the online version of this *User's Guide* you must have the Adobe Reader program installed on your computer. Why would you want to use the online version when you already have the printed version, which you're reading right now? For one thing, the online version gives you the opportunity to search the entire *User's Guide* for a word or phrase. Also, in the online version all hyperlinks are active—if you click an Internet link your browser will open and the web page pointed to by the hyperlink will be loaded. Although the printed version of the *User's Guide* is very useful as a reference document, it is completely incapable of jumping to a website.

You may already have Adobe Reader installed on your computer. If you're not sure about this, here's an easy way to check:

1. Open the **Start Programs** menu.
2. Navigate to the **RILSIM 2.0** submenu.
3. Select the **Documentation** item. This will open a new submenu. See the illustration in the lower half of page 12 for an idea of what this looks like under Windows XP. It will look somewhat different on other versions of Windows, but the general effect will be the same.
4. Within the Documentation submenu, select **User's Guide**.

If this launches the Adobe Reader and loads the online *User's Guide* so that you can read and page through the document, then you're all set and you can skip ahead to page 16.

If, on the other hand, you need to install the Adobe Reader, here is how to do it.

- **If you are installing RILSIM from the CD-ROM.** Adobe Reader is provided on the CD-ROM as part of the RILSIM distribution package. To find the installation file for your computer you need to know which version of the Windows operating system you are using. Separate installation files are provided for Windows 95; Windows 98 and Me; and Windows NT, 2000, and XP. You'll find these on the CD-ROM in separate folders that are located under a main folder named **Acrobat**. Open the appropriate folder in Windows Explorer and double-click the executable file (there is only file in each folder). Then follow the prompts to install Adobe Reader.
- **If you are installing RILSIM from a download.** Adobe Reader is *not* included in the downloadable installation package of RILSIM because this would increase the size of the download significantly. Therefore, if you are installing RILSIM as a download you will need to obtain Adobe Reader separately. The installation file can be obtained from the following website:



<http://www.adobe.com/products/acrobat/readstep2.html>

You will need to register with Adobe in order to download and install the Reader, but the software itself is free of charge.

When you download the software, make a note of its filename and the folder on your computer into which it is being downloaded. After the download is complete, navigate to this folder with Windows Explorer and double-click the filename. Follow the prompts to install the software.

After Adobe Reader has been installed you can launch it by using the **Start Programs** menu, or you can launch it from Windows Explorer by double-clicking any Acrobat file. The registered file extension for an Acrobat file is **.pdf**, which is an abbreviation for "portable document format."

The reason for including Adobe Reader with RILSIM is so that you can use it to access the online version of this *User's Guide*. To do so, follow steps 1-4 on the preceding page. The Reader will launch and the opening page of the *RILSIM User's Guide* will be displayed.

## Adding Optional Features

When you installed RILSIM you may have chosen not to install either or both of the two optional features—the **Sample Files** and the **Documentation Files**. If you later decide you need either or both of these features, you can use the Windows **Add/Remove Programs** utility to install them. Here's how.

1. Click the **Start** button in the lower left corner of your computer screen.
2. In the menu that pops up, either click **Settings > Control Panel** or just click **Control Panel**, depending upon your version of Windows.
3. When the Windows Control Panel appears, launch the **Add/Remove Programs** utility by double-clicking its icon.
4. Navigate to the RILSIM entry in the list of programs and click to highlight it. Click the **Change** button if there is one; otherwise click the **Add/Remove** button. In either case the Windows Installer will open and you will be presented with a window similar to the one below.



5. Select the **Modify** option, which is the default. After you click the **Next** button you'll see the dialog that was shown in **Step 7a** on page 9 of this chapter. Click the down arrow next to the feature you want to install, and in the popup window that appears, select the option to install the feature on the local hard drive (see **Step 7b** on page 10). Repeat this process for each new feature you want to install. When you're satisfied with the options you've selected, press **Next** and the optional feature(s) will be installed.

## Repairing RILSIM

If after using RILSIM for awhile you discover that it doesn't work properly or that some of the files have unaccountably gone missing, you may need to repair the installation. Follow the steps shown on the opposite page but in the Program Maintenance dialog select **Repair** rather than Modify. You may be asked to insert the CD-ROM from which the installation was launched, or to point to the original installation file if you installed RILSIM from a download. In the latter case, if you've deleted the installation package you'll need to download it again. See the bottom of page 3 in this chapter for the website where the package is located.

## Reinstalling RILSIM

An alternative way to repair RILSIM is to remove it from your computer and then install it again. This is somewhat "cleaner" in that it removes all of the Windows Registry entries related to RILSIM and then re-establishes them for the new installation. Be sure to follow the instructions below for uninstalling RILSIM. Then follow the step-by-step instructions for installing RILSIM as described beginning on page 3 of this chapter.

## Removing RILSIM

As wonderful as RILSIM is, not everyone wants it on their computers. You may use it for a time and then decide it that doesn't meet your needs. Or you decide to upgrade to a more recent version and need to uninstall the older version first. For whatever reason, you'll find that removing RILSIM from your computer is even easier than installing it.

Follow the steps outlined on the opposite page except that in **Step 4** you should click the **Remove** button if there is one. Otherwise click **Add/Remove**. Don't be unnerved by any popup message announcing that Windows is starting an "Installation" process. Windows Installer is used not only to install RILSIM but also to *un*install it.

In versions of Windows that offer a **Remove** button within the **Add/Remove Programs** utility, the removal will proceed automatically. Otherwise, a window like the one on page 16 will appear. Select the **Remove** option and then click **Next**.

After the main components of RILSIM have been removed from your computer you may see a message like the one below. Under nearly all circumstances your answer to the question posed in this message should be **Yes**. It's unlikely that you would have stored additional files in the folder indicated, since it is normally used only as a temporary location for installation files.



This message is provided mainly as a courtesy. However, you can always say **No** if you aren't certain about this, and check the contents of the folder yourself. You may need to write down the pathname shown in this message so that you can navigate to the folder with Windows Explorer. The actual

pathname may be quite different from the one in the message window shown here; this varies widely among different versions of Windows. After you have navigated to the folder you can move anything you want to keep to another location and then delete the folder.

During the removal process the Windows Installer *does not* remove your **RILSIM Data** folder (see the discussion under the **First Launch** topic on page 13 of this chapter). If you want to remove this folder and the files in it you must therefore do so yourself.